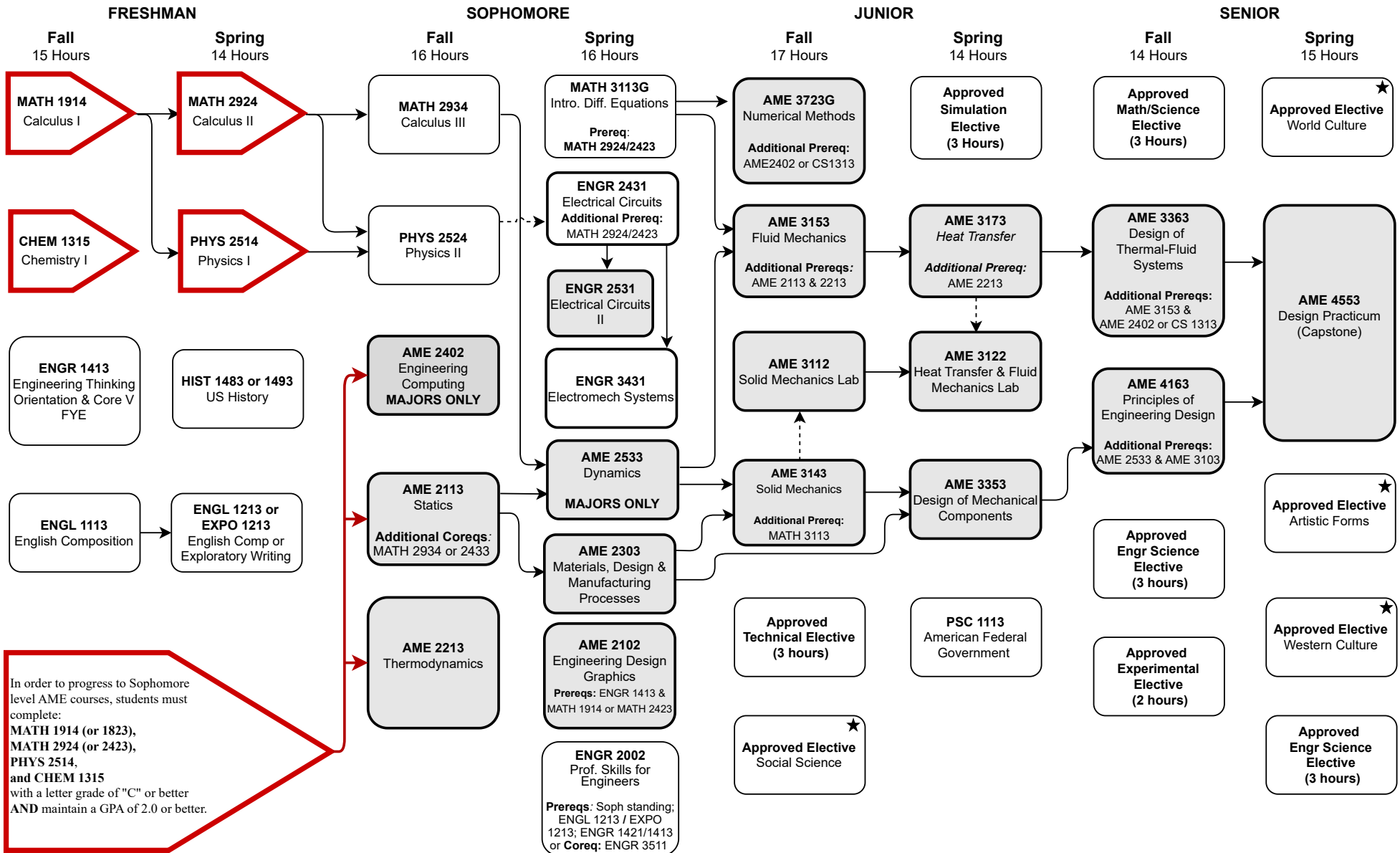


Bachelor of Science in Mechanical Engineering (Standard Option B675)

Summer 2024 through Spring 2025 – Total Credit Hours: 121

This flowchart is not an official check sheet of degree requirements. It is meant to be used as a supplemental visual guide along with the official University of Oklahoma degree check sheet.



★ At least one of these Gen. Ed. courses must be 3000-4000 level. Foreign Language: 2 semesters college level or 2 years of high school. HS History Deficiency

← - - - → Co-requisite ← → Prerequisite Shaded courses are offered once per year during designated semester.

Date Reviewed: _____

Per Department: Courses taken during Winter Intersession will not qualify for AME course credit.

AME Forms & Electives can be found here: <https://www.ou.edu/coe/ame/resources/forms-fe>