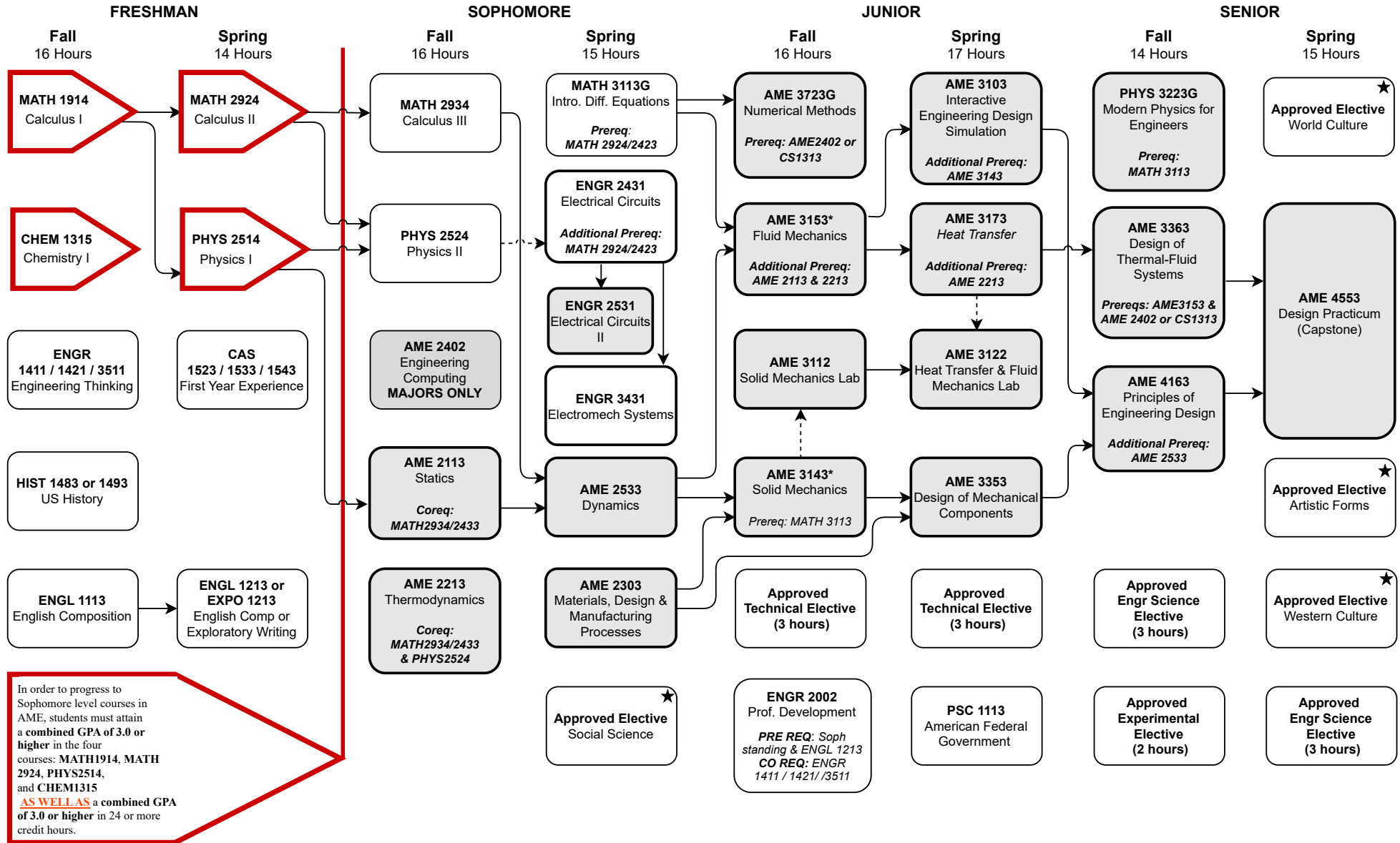


Bachelor of Science in Mechanical Engineering (Standard Option B675)

Summer 2023 through Spring 2024 – Total Credit Hours: 123

This flowchart is not an official check sheet of degree requirements. It is meant to be used as a supplemental visual guide to be used along with the official University of Oklahoma degree check sheet.



★ At least one of these Gen. Ed. courses must be 3000-4000 level. Foreign Language: 2 semesters college level or 2 years of high school. HS History Deficiency

← - - - → Co-requisite. ↔ Prerequisite Shaded courses offered once per year.

Per AME: Courses taken during Winter and Spring Intersessions will not qualify for AME course credit.

AME Electives and Flowcharts can be found here: <https://www.ou.edu/coe/academics/advising/degree-plans-and-flowcharts>