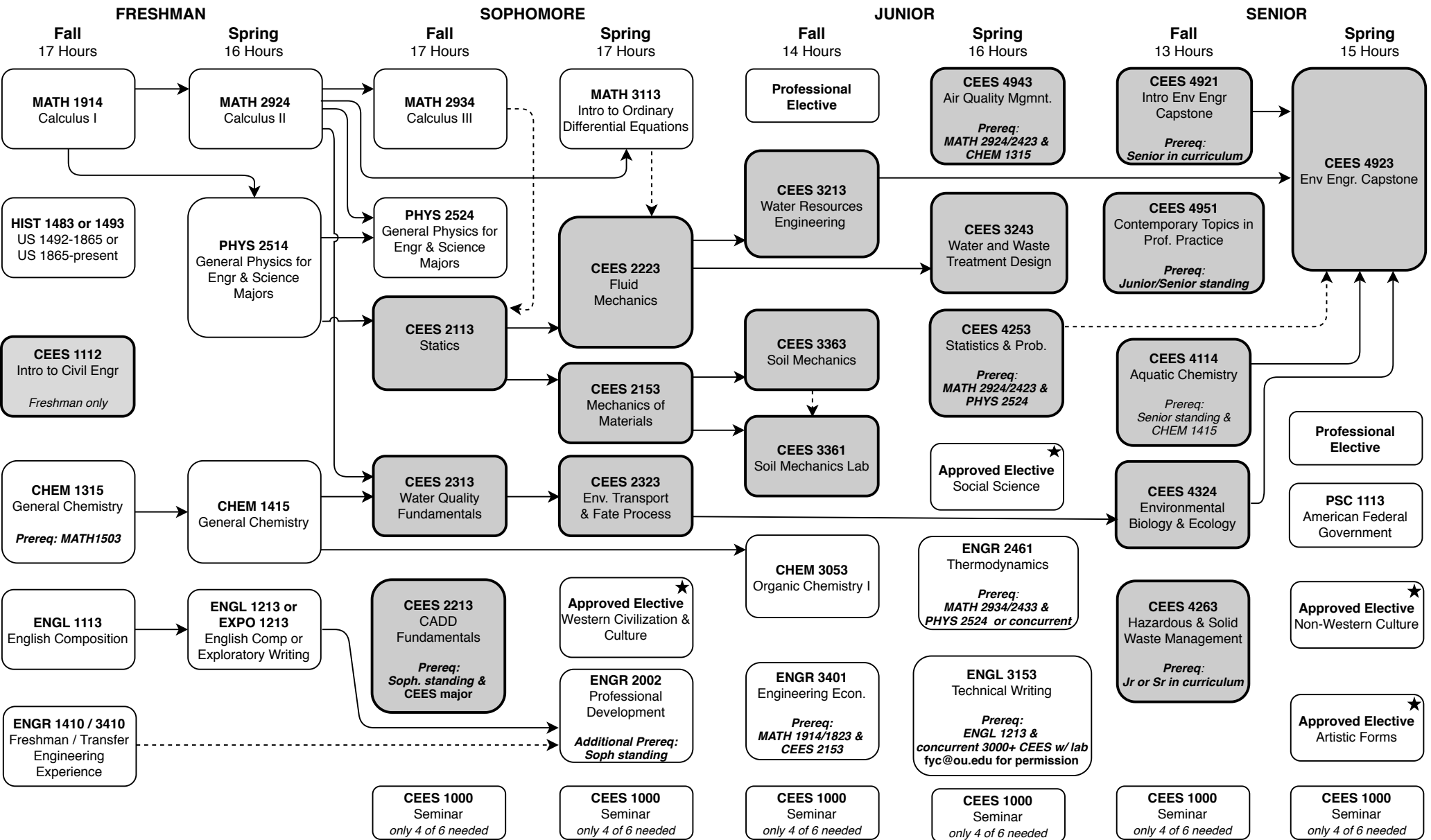


Bachelor of Science in Environmental Engineering (Standard Option B390)

Summer 2020 through Spring 2021 – Total Credit Hours: 125

This flowchart is not an official check sheet of degree requirements. It is meant to be used as a supplemental visual guide to be used along with the official University of Oklahoma degree check sheet.



★ At least one of these Gen. Ed. courses must be 3000-4000 level.
 Foreign Language: 2 semesters college level or 2 years of high school.

 ← - - → Co-requisite.
 ↔ Prerequisite
 Shaded courses offered once per year.
 HS History Deficiency