

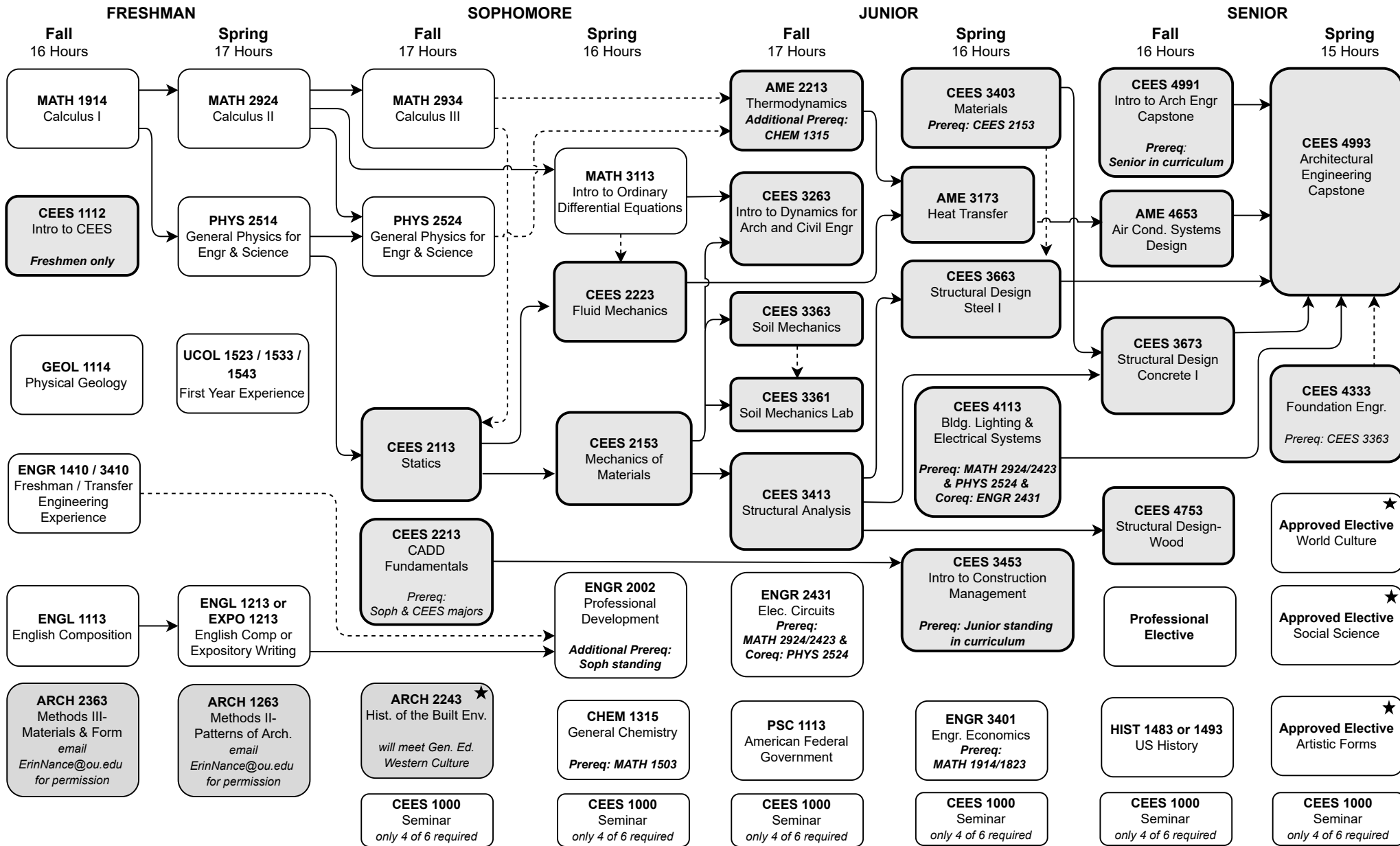
Name: _____

Sooner ID: _____

Bachelor of Science in Architectural Engineering (Standard Option B035)

Summer 2022 through Spring 2023 – Total Credit Hours: 130

This flowchart is not an official check sheet of degree requirements. It is meant to be used as a supplemental visual guide to be used along with the official University of Oklahoma degree check sheet.



★ At least one of these Gen. Ed. courses must be 3000-4000 level.
 Foreign Language: 2 semesters college level or 2 years of high school.

Co-requisite. Prerequisite Shaded courses offered once per year. HS History Deficiency

Professional Electives and Flowcharts can be found here: www.ou.edu/content/coe/academics_flowcharts.html

Note: Utilize flowcharts as a supplemental guide to OU Official check sheet <http://checksheets.ou.edu>