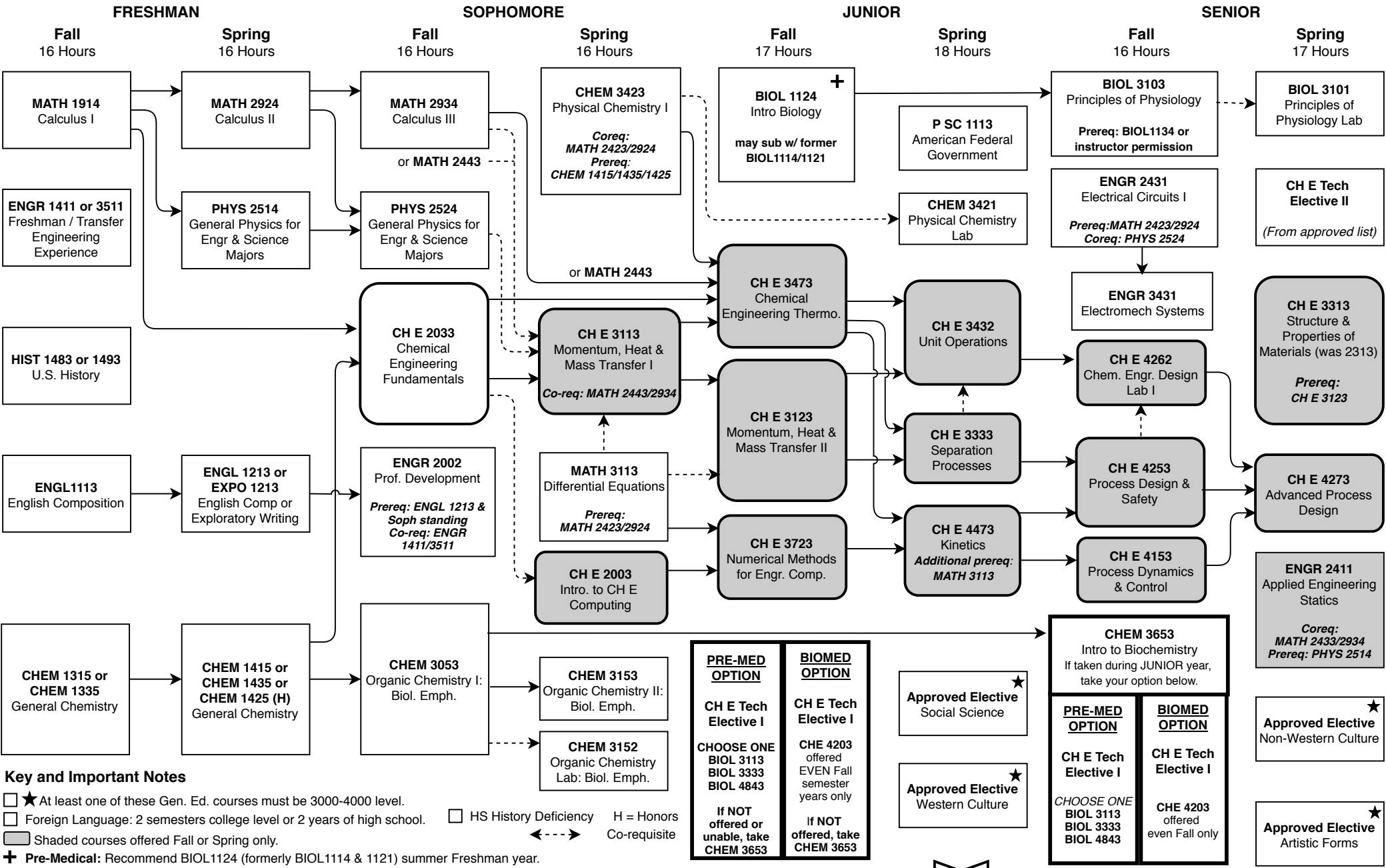


Bachelor of Science in Chemical Engineering (CH E – B163 Pre-medical / Biomedical Engineering)
 Summer 2019 through Spring 2020 – Total Credit Hours: 133
 This flowchart is not an official check sheet of degree requirements. It is meant to be used as a supplemental visual guide to be used along with the official University of Oklahoma degree check sheet.



Key and Important Notes

- ★ At least one of these Gen. Ed. courses must be 3000-4000 level.
- Foreign Language: 2 semesters college level or 2 years of high school. □ HS History Deficiency H = Honors
- ◻ Shaded courses offered Fall or Spring only. ◀-----▶ Co-requisite
- + **Pre-Medical:** Recommend BIOL1124 (formerly BIOL1114 & 1121) summer Freshman year.

All students must take **CHEM 3653** Intro to Biochem and two technical electives. Follow the Pre-med or Biomed option choices.
Pre-Medical: One of the electives must be chosen from **BIOL 3113, 3333, or 4853**. See Pre-Med advisor each semester.
Biomedical: Technical electives must include **CH E 4203 (offered alternate even Falls only)** and an approved biological content elective.

