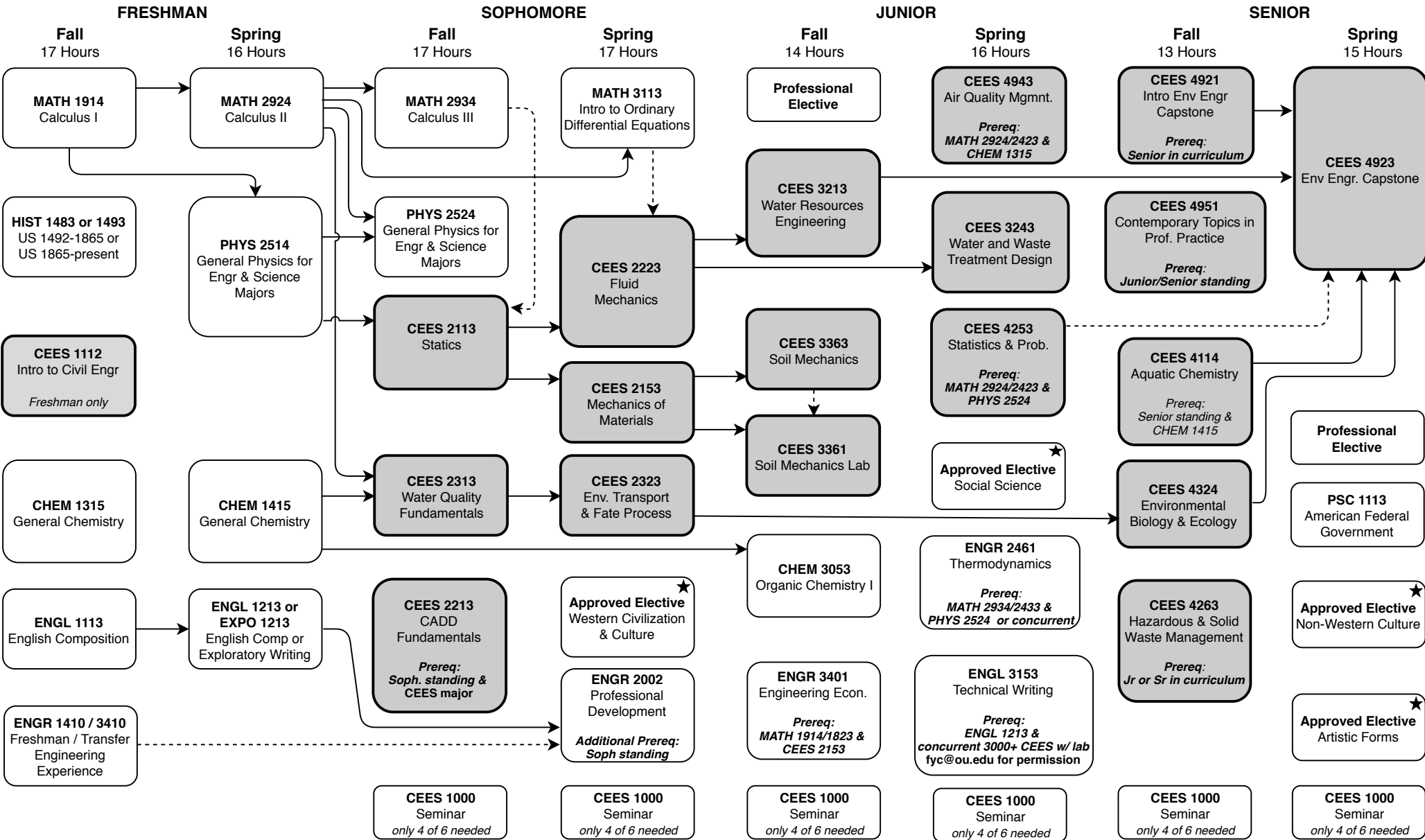


Bachelor of Science in Environmental Engineering (Standard Option B390)

Summer 2018 through Spring 2019 – Total Credit Hours: 125

This flowchart is not an official check sheet of degree requirements. It is meant to be used as a supplemental visual guide to be used along with the official University of Oklahoma degree check sheet.



- ☐ ★ At least one of these Gen. Ed. courses must be 3000-4000 level.
- ☐ Foreign Language: 2 semesters college level or 2 years of high school.
- ← - - -> Co-requisite.
- ↔ Prerequisite
- ▭ Shaded courses offered once per year.
- ☐ HS History Deficiency