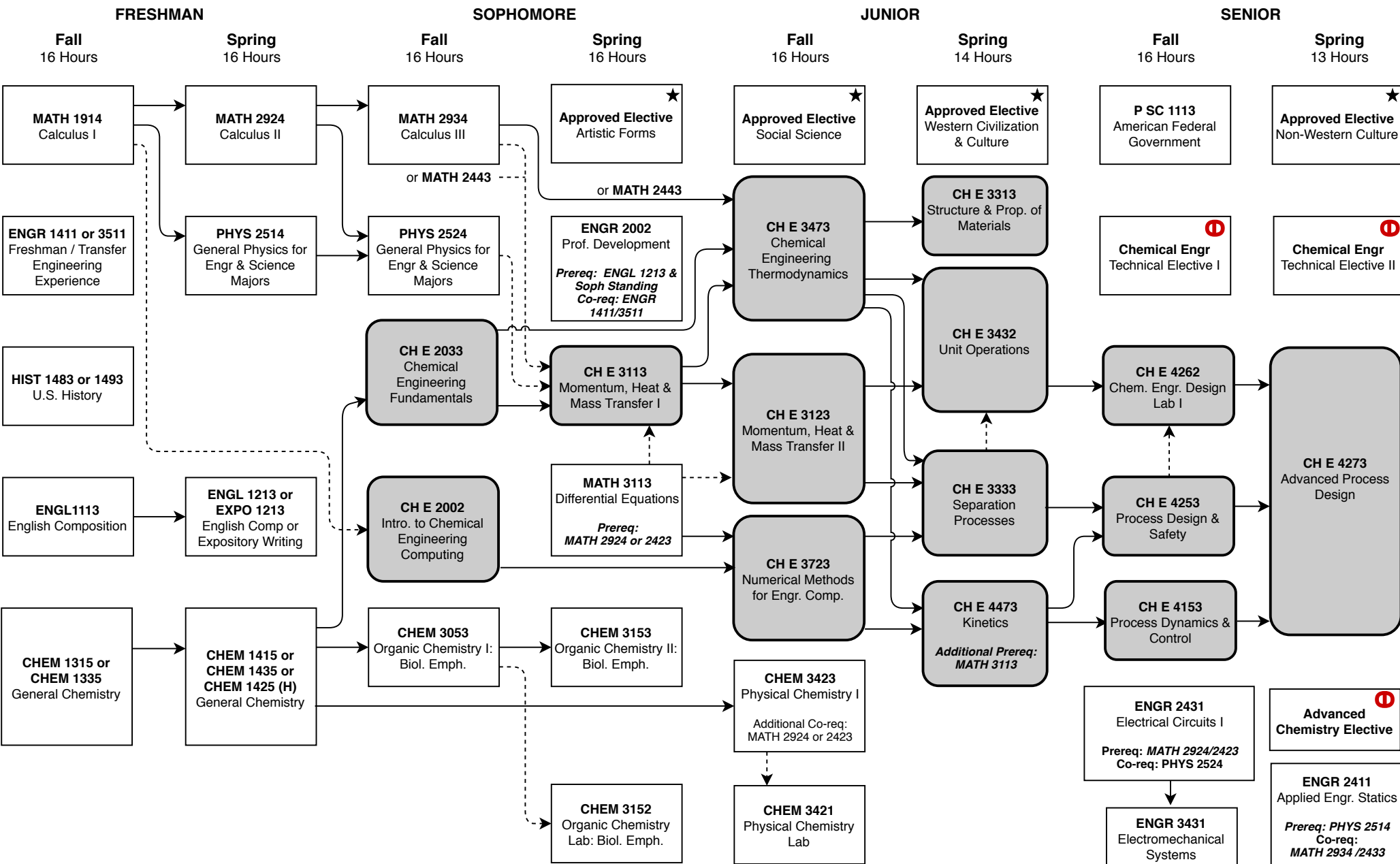


Bachelor of Science in Chemical Engineering (CH E – B160 Standard)

Summer 2018 through Spring 2019 – Total Credit Hours: 123

This flowchart is not an official check sheet of degree requirements. It is meant to be used as a supplemental visual guide to be used along with the official University of Oklahoma degree check sheet.



Key and Important Notes

H = Honors option

- ★ At least one of these Gen. Ed. courses must be 3000-4000 level.
- Foreign Language: 2 semesters college level or 2 years of high school.

Shaded courses offered once per year.

←---→ Co-requisite ↔ Prerequisite

Technical Electives from approved list (one must be CH E course)

HS History Deficiency