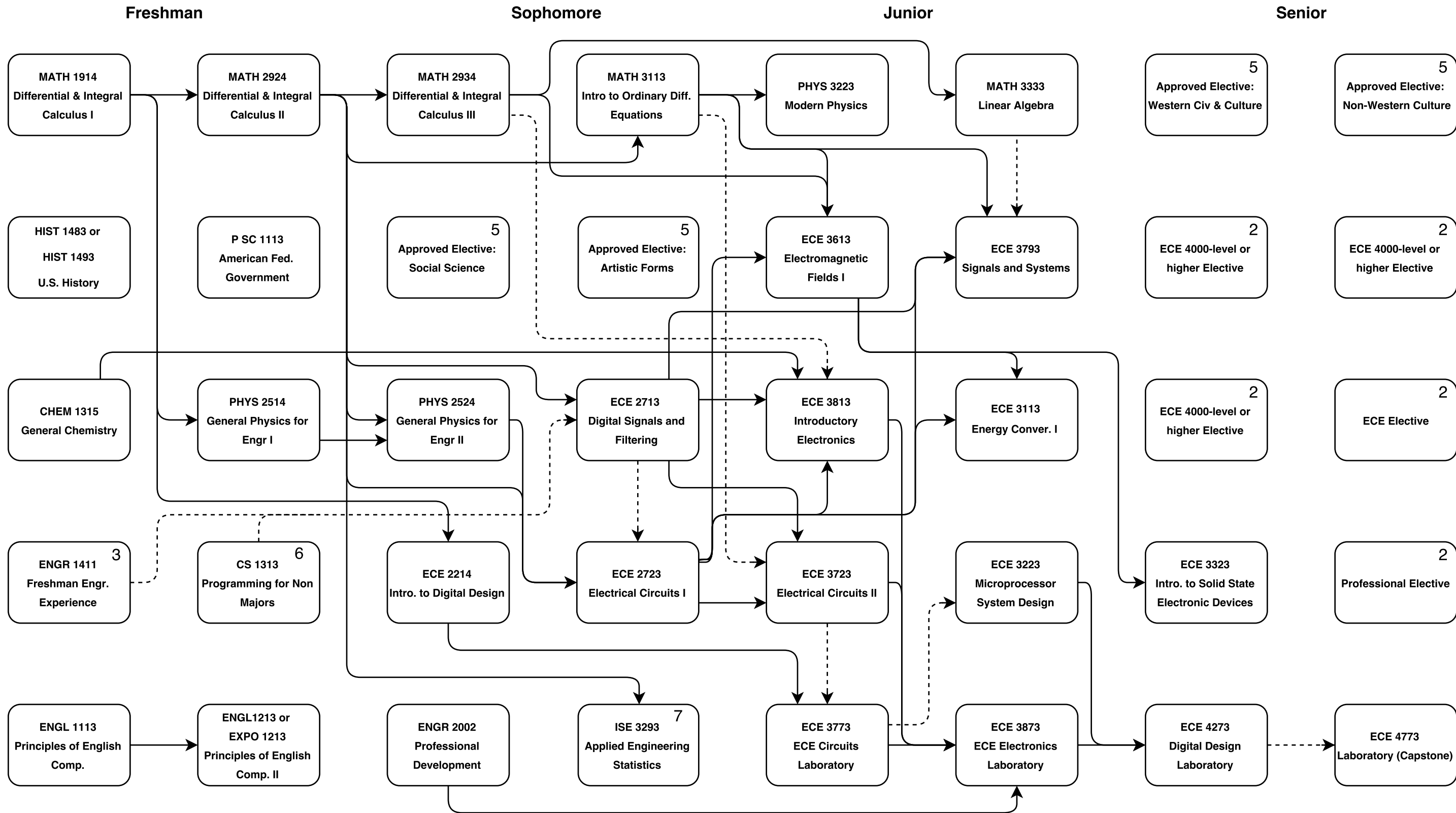


Name:  
ID #:  
Date:

# Bachelor of Science in Electrical Engineering (B350)

## Summer 2017-Spring 2018 -- Total Credit Hours: 125

Modified September 2017



**Notes:**

1. Dotted connecting lines (- -) indicate that the two courses may be taken concurrently.
2. Electives to be chosen from list available in ECE office, DEH 150.
3. Transfer students take ENGR 3511 instead of ENGR 1411.
4. Foreign language: met with two college-level semesters or two years of the same foreign language in high school.
5. These four courses (12 hours) must be chosen from the University-wide General Education approved course list: <http://www.ou.edu/content/gened/courses.html>. Three of the 12 hours must be upper-division (3000-4000 level).
6. CS 1323 is an approved substitution for CS 1313
7. Math 4733 is an approved substitution for ISE 3293

This flowchart is not an official notice of degree requirements. It is meant to be used as a supplemental visual guide to be used along with the official University of Oklahoma degree checksheet: <http://www.ou.edu/content/checksheets/engineering.html>.