

Name:  
ID #:  
Date:

**Bachelor of Science in Computer Engineering (B225)**  
**Summer 2017-Spring 2018 -- Total Credit Hours: 126**

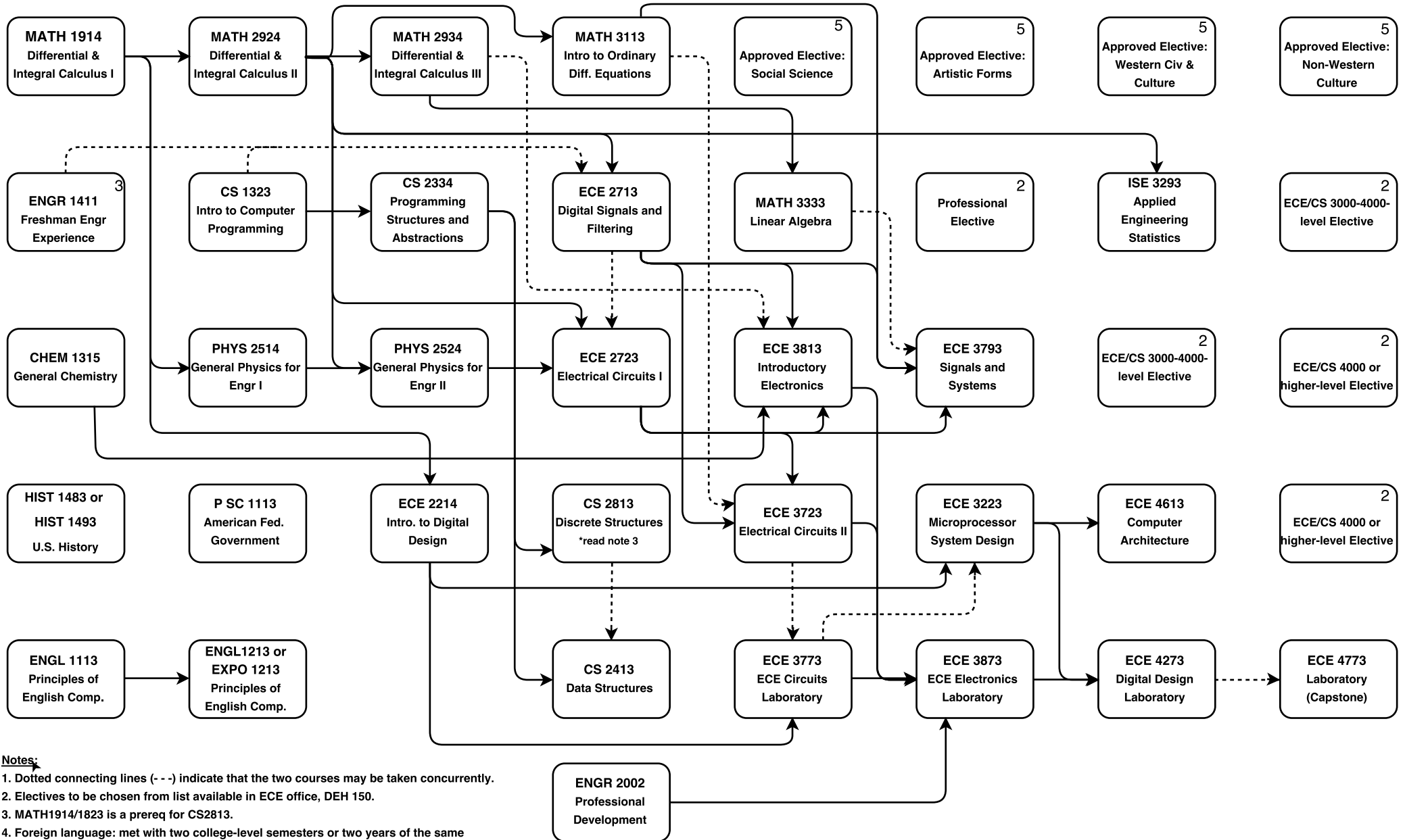
Modified 10/25/17

Freshman

Sophomore

Junior

Senior



**Notes:**

- Dotted connecting lines (- -) indicate that the two courses may be taken concurrently.
- Electives to be chosen from list available in ECE office, DEH 150.
- MATH1914/1823 is a prereq for CS2813.
- Foreign language: met with two college-level semesters or two years of the same foreign language in high school.
- These four courses (12 hours) must be chosen from the University-wide General Education approved course list: <http://www.ou.edu/content/gened/courses.html>. Three of the 12 hours must be upper-division (3000-4000 level).

This flowchart is not an official notice of degree requirements. It is meant to be used as a supplemental visual guide to be used along with the official University of Oklahoma degree checksheet: <http://www.ou.edu/content/checksheets/engineering.html>.