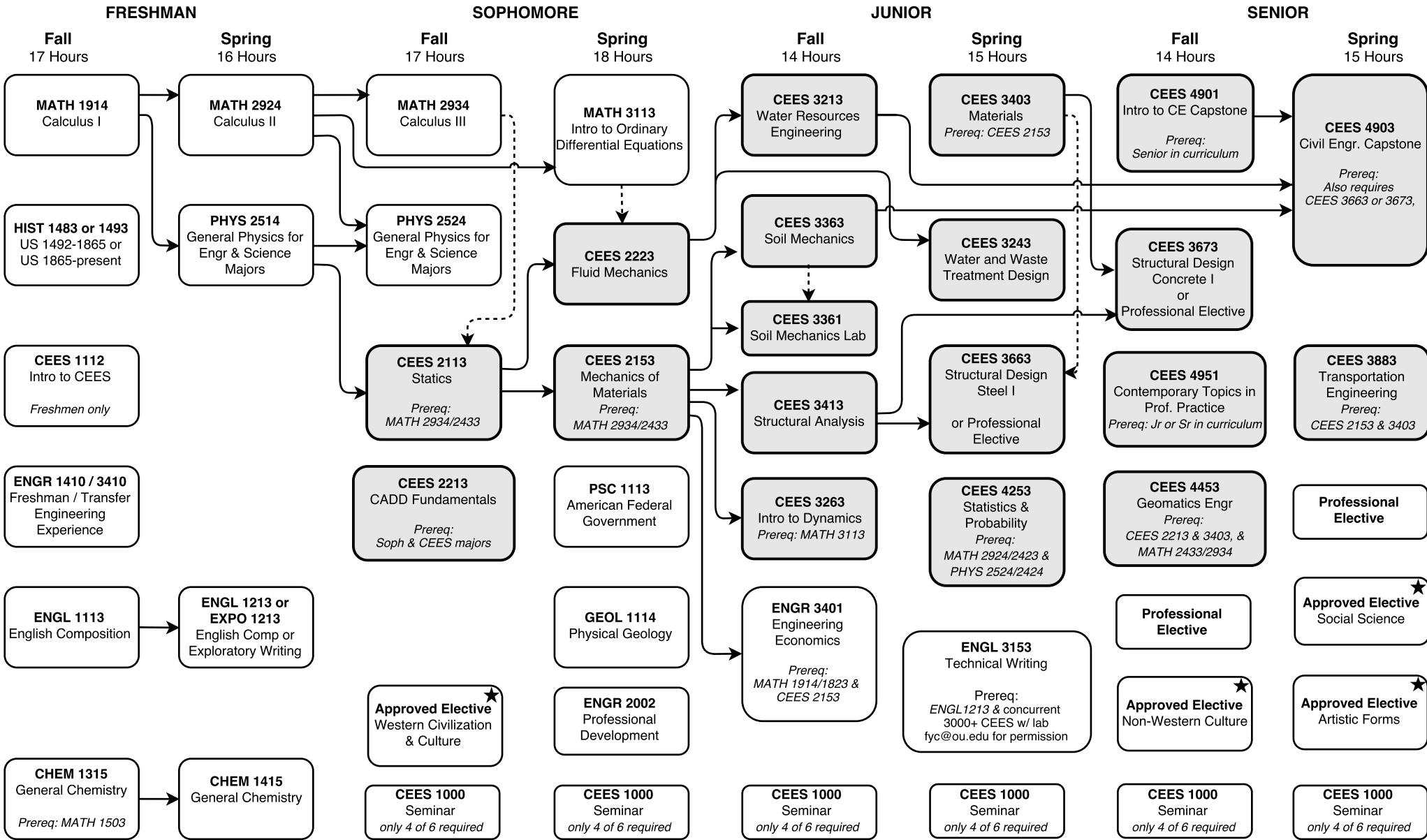


Bachelor of Science in Civil Engineering (Standard Option B190)

Summer 2017 through Spring 2018 – Total Credit Hours: 126

This flowchart is not an official check sheet of degree requirements. It is meant to be used as a supplemental visual guide to be used along with the official University of Oklahoma degree check sheet.



★ At least one of these Gen. Ed. courses must be 3000-4000 level.
 Foreign Language: 2 semesters college level or 2 years of high school.

 ←---→ Co-requisite. ↔ Prerequisite Shaded courses offered once per year.