

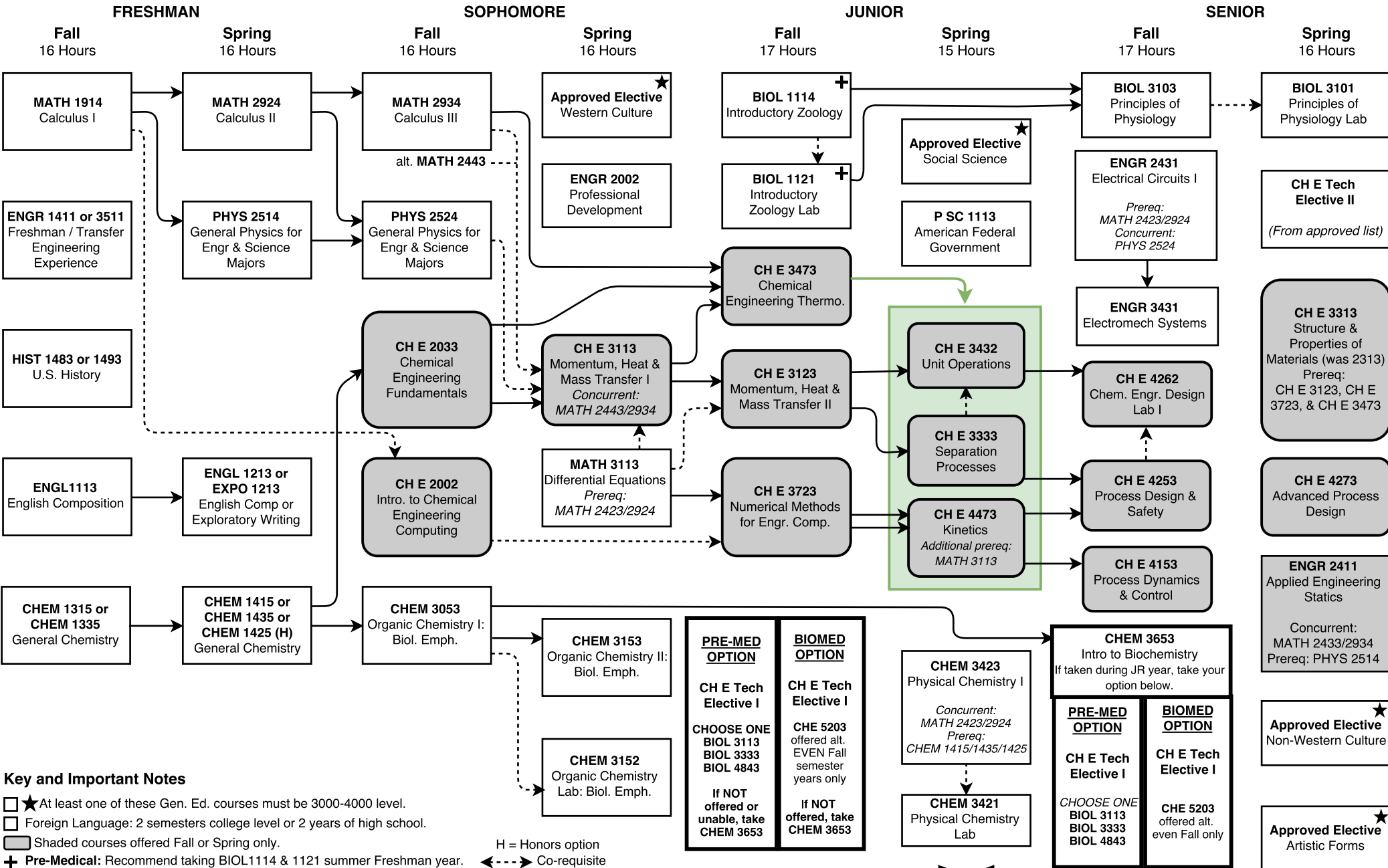
Name: _____

Sooner ID: _____

Bachelor of Science in Chemical Engineering (CH E – B163 Pre-medical / Biomedical Engineering)

Summer 2017 through Spring 2018 – Total Credit Hours: 132

This flowchart is not an official check sheet of degree requirements. It is meant to be used as a supplemental visual guide to be used along with the official University of Oklahoma degree check sheet.



Key and Important Notes

- ★ At least one of these Gen. Ed. courses must be 3000-4000 level.
- Foreign Language: 2 semesters college level or 2 years of high school.
- Shaded courses offered Fall or Spring only.
- H = Honors option
- + Pre-Medical: Recommend taking BIOL1114 & 1121 summer Freshman year.
- Co-requisite

PRE-MED OPTION	BIOMED OPTION
CH E Tech Elective I	CH E Tech Elective I
CHOOSE ONE BIOL 3113 BIOL 3333 BIOL 4843	CHE 5203 offered alt. EVEN Fall semester years only
If NOT offered or unable, take CHEM 3653	If NOT offered, take CHEM 3653

All students must take CHEM 3653 Intro to Biochem and two technical electives. Follow the Pre-med or Biomed option choices.
Pre-Medical: One of the electives must be chosen from BIOL 3113, 3333, or 4853. See Pre-Med advisor each semester.
Biomedical: Technical electives must include CH E 5203 (offered alternate even Falls only) and an approved biological content elective.

