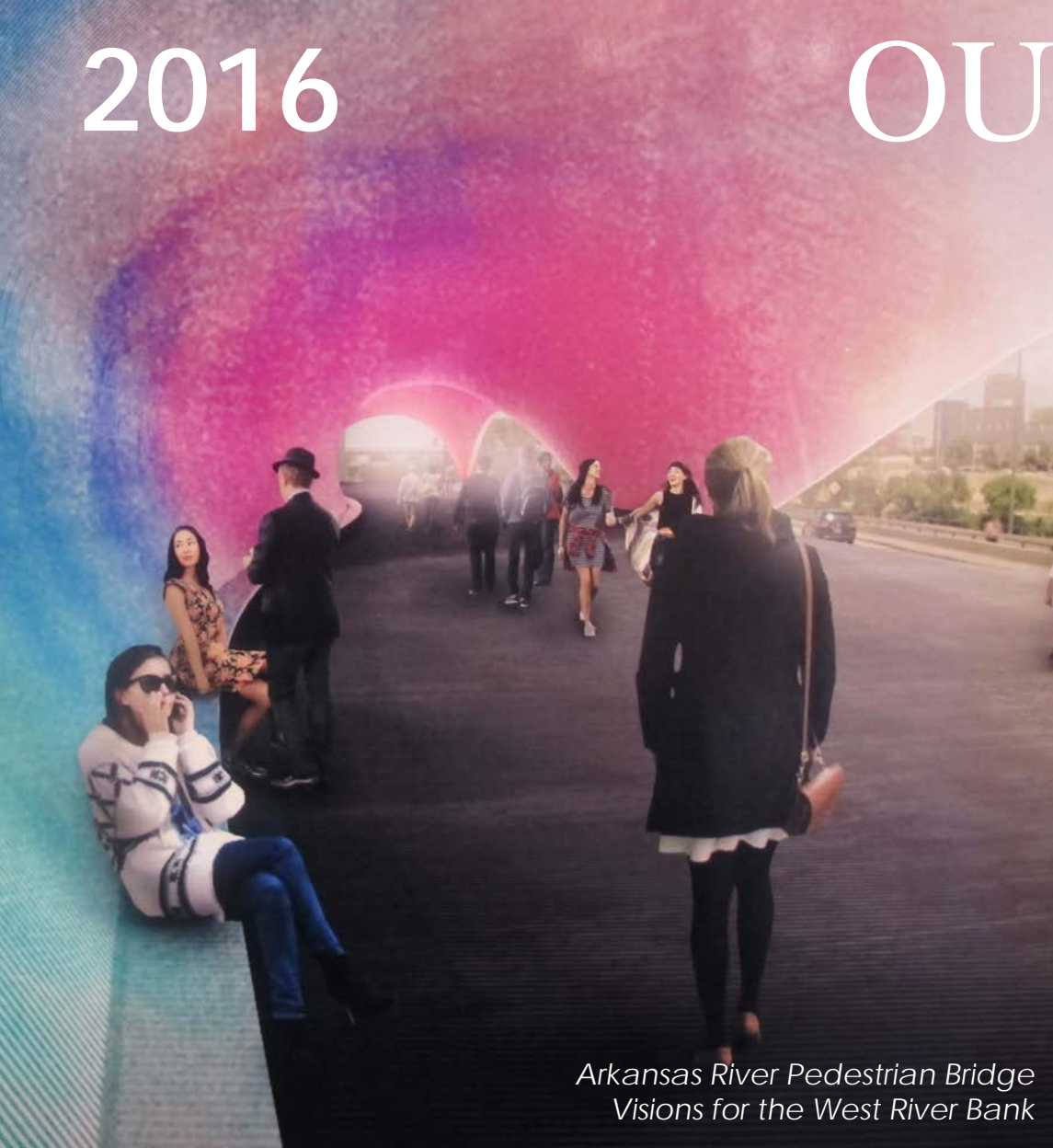


2016

OUUDS
Urban Design Studio

Annual Report

Arkansas River Pedestrian Bridge
Visions for the West River Bank



The University of Oklahoma Urban Design Studio was founded in 1988 with the three-part mission to **train urban design professionals** through master's degree programs in architecture and urban studies, to **advance understanding of the city** through research and creative activity, and to **engage in community design** projects benefiting Tulsa and Northeast Oklahoma.



People

Faculty

Shawn Schaefer AIA, AICP
Kevin Anderson
Michael Birkes AIA
Jay Chandler JD
James Wagner PE, AICP
Greg Warren ASLA

Graduate Students

Paulina Baeza
Curtis Blevins
Kyle Clifton
Kelly Cook
Nathan Foster
Joel Hensley
Robi Jones
Maryam Moradian
Daniel Sperle
Kasey St. John
Amanda Yamaguchi

Professional Advisory Board

Michael Birkes AIA
Principal, Michael Birkes Architecture

Steve Carr
Senior Planner, City of Tulsa

Tom Costner MD
Director of Palliative Care, St. Francis Health System

Farhad Daroga AICP
Director of Planning, City of Broken Arrow

Joani Dotson MPH
Assistant Director, Tulsa Health Department

John Griffin CNU
Urban Designer, Selser Schaefer Architects

Steve Olsen AIA
Principal, Steve Olsen Architects

Tom Wallace PE
President, Wallace Engineering

Dawn Warrick AICP
Director of Planning, City of Tulsa

Rachel Zebrowski AIA
President, Miles Associates

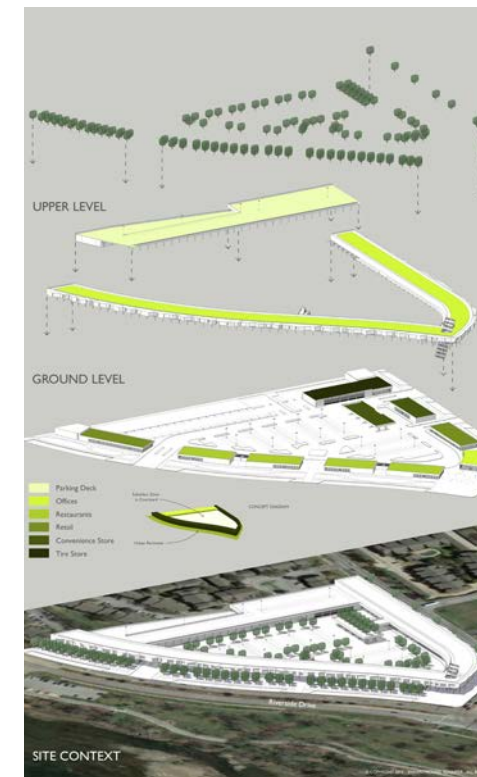


RIVERSIDE DRIVE PROMENADE

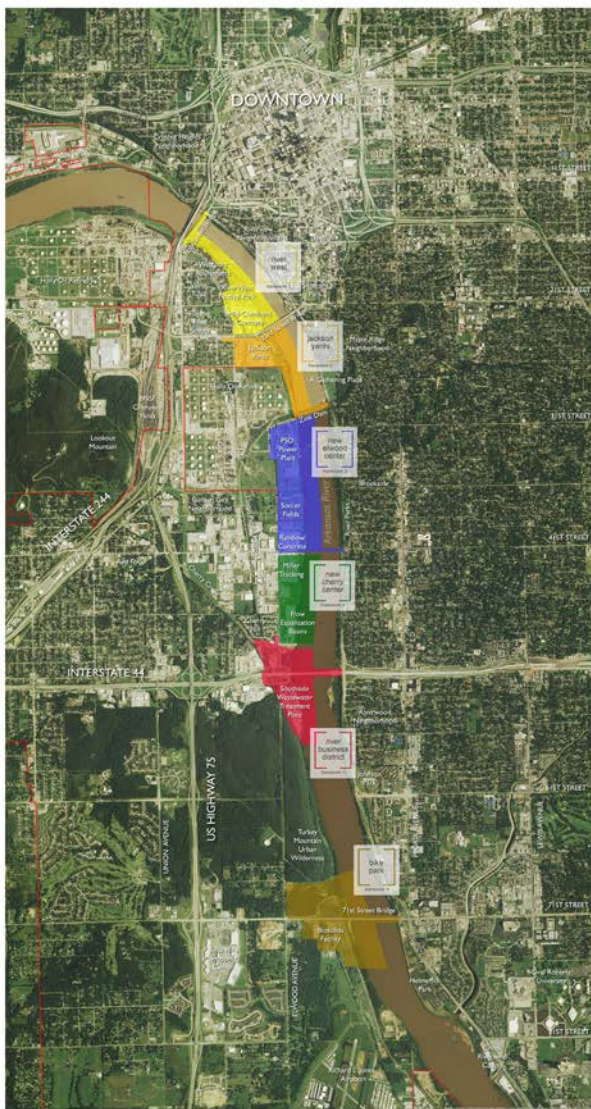
Studio Projects

Visions for the West River Bank

2016 was the year **Tulsa rediscovered the Arkansas River** and the Urban Design Studio was part of it! In anticipation of the passage of Vision Tulsa and the addition of water in the river with low-water dams, the City of Tulsa foresaw the need for river development guidelines. Director Schaefer served on the **River Development Task Force** that worked with INCOG planners to craft the River Development Overlay zoning adopted during the summer. Urban Design Studio students made meaningful contributions to the process by testing development regulations and illustrating design possibilities at several locations, using models and renderings created at the studio and in conjunction with architects at the McIntosh Group. The river also became the subject of our spring studio project. Recognizing the fact that the East River Bank of the Arkansas River is already largely developed, students saw the



River Development Concept Views



Urban design framework map and eye-level renderings from the competition



need to focus on the **opportunities offered by the West River Bank**. It has multiple large brownfield sites, including the Rainbow and Mid-Continent Concrete Batch Plants, as well as several large city parcels ripe for redevelopment. The West River Bank also has breathtaking views of downtown, great highway access, and park amenities like the River West Festival Park and the Turkey Mountain Urban Wilderness Area. The students divided the West River Bank into six urban design frameworks and created a competition brief for teams of Architecture and Landscape Architecture students from the College of Architecture in Norman. Each team was given a program for redeveloping a brownfield or infrastructure site, designing a major landscape feature or attraction, and maintaining and improving the River Parks greenway system. The teams' proposals were reviewed by a jury of design professionals and civic leaders. Members of the winning team each received \$400 stipends to advance their education. All of the entries were displayed on



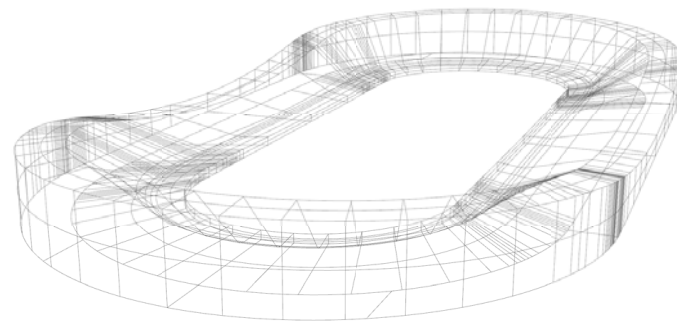
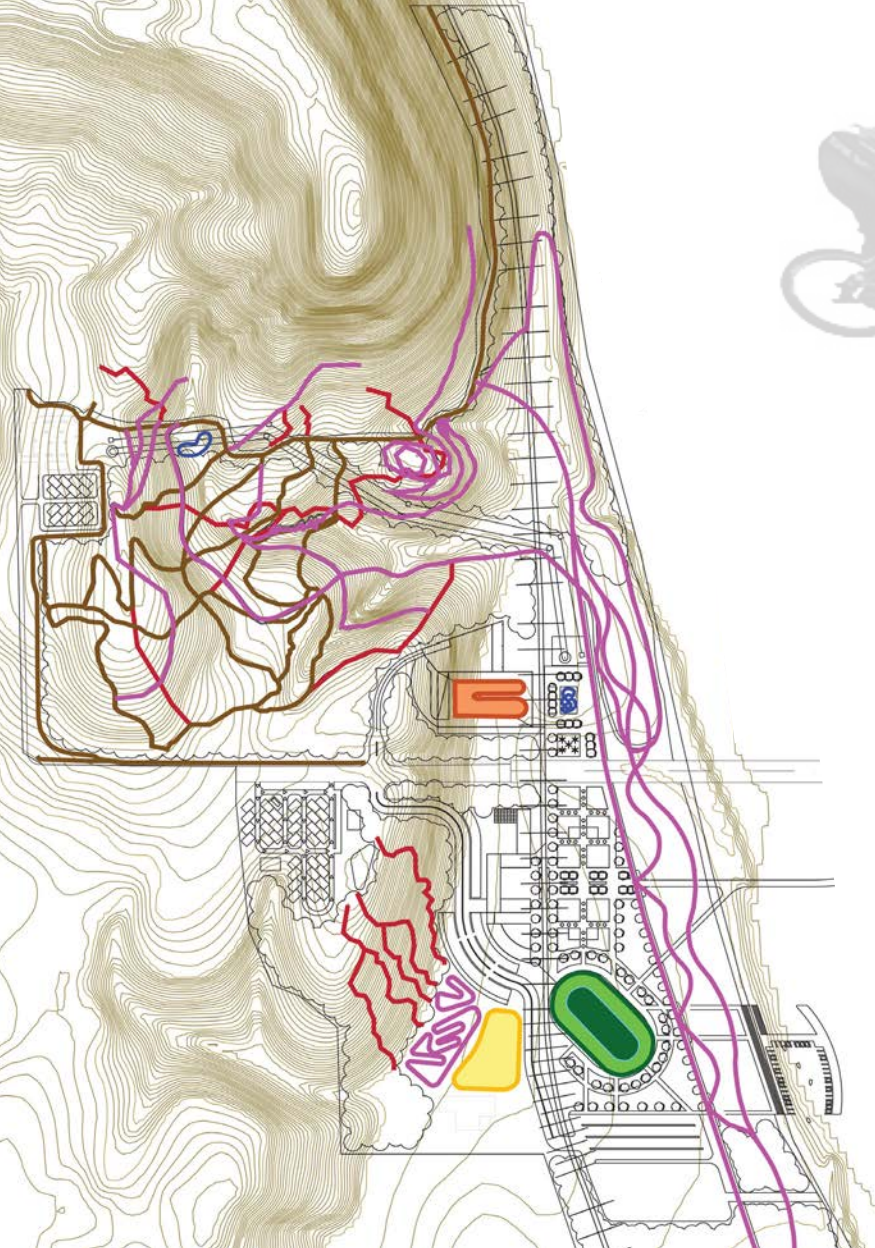
OU-Tulsa President John Schumann M.D. with Director Schaefer and Paulina Baeza at the opening of the exhibit



The winning design team poses with the jury

The studio wishes to thank the sponsors of the Visions for the West River Bank project:

- Tulsa Tough
- Cynergy AEC
- Tom Wallace
- Tom and Patty Costner



TULSA bikepark

TURKEY MOUNTAIN - RIVER WEST BANK

May 11th at the Cyntergy Community Room in Downtown Tulsa. The exhibit attracted **over 200 hundred visitors** and received extensive press coverage.

One of the frameworks included a proposal for a **bike park at the foot of Turkey Mountain**. Urban Design Studio students Maryam Moradian, Paulina Baeza, and Joel Hensley partnered with **Tulsa Tough** to create a program and design scenarios for the bike park, and worked closely with founders Malcolm McCollam and Chris Zenthoefer throughout the process. Even though the bike park was not included in the successful Tulsa Vision sales tax package, the development of the river and the ever increasing popularity of Turkey Mountain for cycling enthusiasts means this proposal still has an excellent future potential as a recreation destination.



Tulsa Tough Executive Director Malcolm McCollam shares ideas with cyclists about the bike park at the exhibit



Joel Hensley leads students from Norman on a bike tour of the West River Bank trail



Pocket park off Broadway in Downtown Muskogee



DOWNTOWN MUSKOGEE

A Landscape of Hope

Muskogee has faced its share of challenges, but at its heart it is a **hopeful community** looking to rediscover and reinvigorate its historic downtown. It takes a team for a project of this magnitude, and the Urban Design Studio is fortunate to work with some great partners. The **City of Muskogee** is our primary partner, with Gary Garvin and the Planning Department taking the lead. **Downtown Muskogee Incorporated** is providing a **\$29,500 technical services contract** to support the project. The studio is sharing the contract with the OU Institute for Quality Communities, led by Shane Hampton. The city has also engaged an economic development consultant, Ron Drake, who is working closely with the planning and design team. Finally, OU Professor of Human Relations Chan Hellman joins us as an expert in the theory and science of hope. Downtown Muskogee's plan will be a hopeful one with clear goals for the future with the will and the way to implement it.



Kyle Clifton and Robi Jones staff the Urban Design Studio booth at the Muskogee Farmers' Market



Interdisciplinary teams of Architecture, Landscape Architecture, and Planning students from Norman will develop **six different scenarios** for the future of Arrowhead mall next spring, using a competition brief created by Urban Design Studio students.

One of the interesting contrasts in Downtown Muskogee is the juxtaposition of the Arrowhead Mall, a prototypical suburban retail mall located two blocks north of the traditional shopping district on Broadway.



Community Hope Visioning Workshop

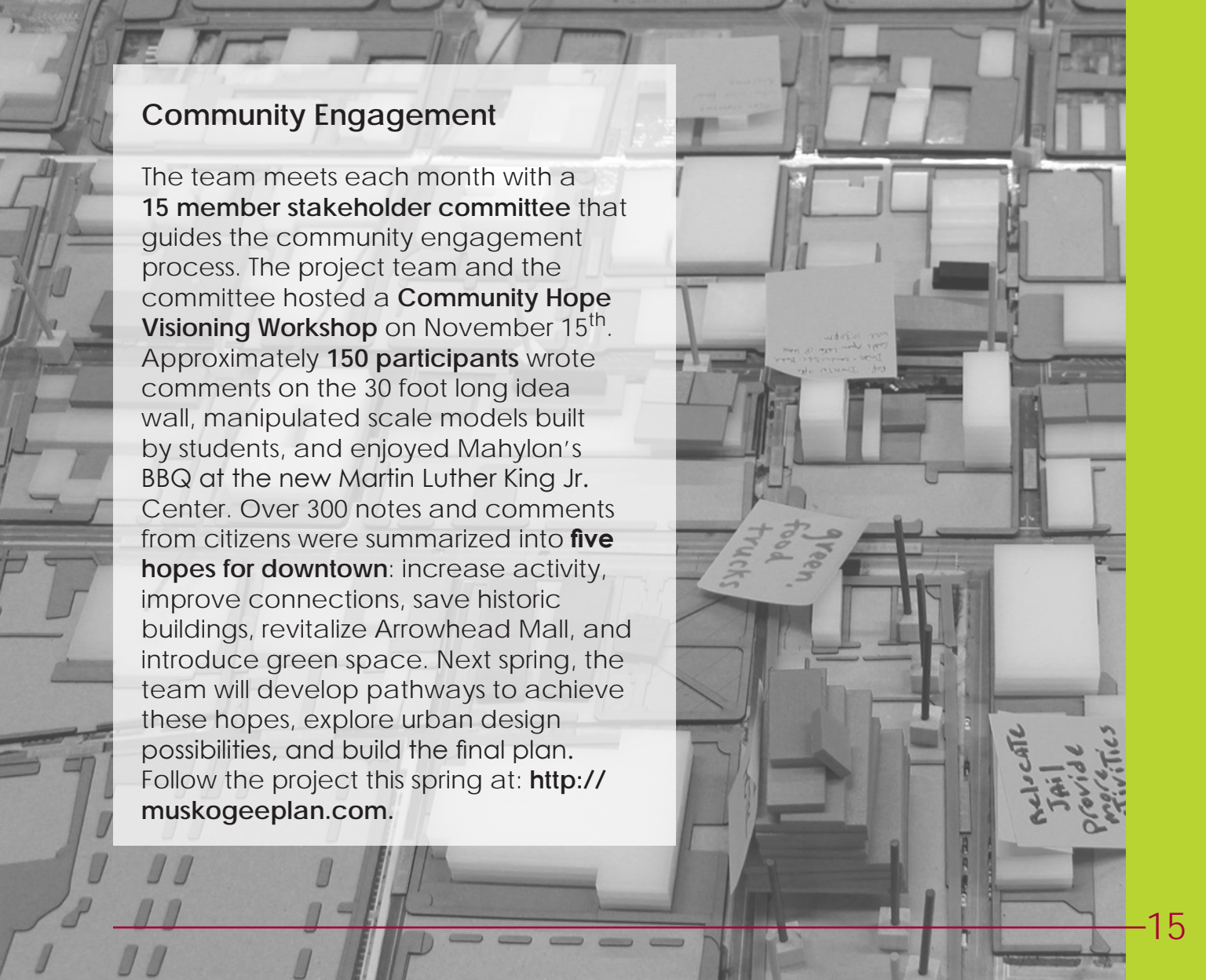
Community Engagement

The team meets each month with a **15 member stakeholder committee** that guides the community engagement process. The project team and the committee hosted a **Community Hope Visioning Workshop** on November 15th. Approximately **150 participants** wrote comments on the 30 foot long idea wall, manipulated scale models built by students, and enjoyed Mahylon's BBQ at the new Martin Luther King Jr. Center. Over 300 notes and comments from citizens were summarized into **five hopes for downtown**: increase activity, improve connections, save historic buildings, revitalize Arrowhead Mall, and introduce green space. Next spring, the team will develop pathways to achieve these hopes, explore urban design possibilities, and build the final plan. Follow the project this spring at: <http://muskogeplan.com>.



Workshop participants adding to the idea wall.

OU Student Rachel Clyne greeting citizens.





At her Professional Project defense, Kelly Cook projected an image of Turkey Mountain on a topographic model made with the CNC router at FabLab Tulsa.

Professional Projects

Five students successfully defended their professional projects this year:

- Amanda Yamaguchi's **Sequoyah Elementary Active Transportation Analysis** was awarded first prize in the Social and Behavioral Research category at the OU-Tulsa Research Forum.
- Curtis Blevins developed a plan for a **Community Garden for Sand Springs**.
- Working with the RiverParks Authority, Kelly Cook conducted a user study for **Turkey Mountain: Tulsa's Wild Place**. Kelly was awarded third prize in the Social and Behavioral Research category at the OU-Tulsa Research Forum.
- Nathan Foster used his project to **Re-Think Transit** by improving Tulsa's bus transit.
- Daniel Sperle's **Route 66 Innovation District** explores economic activity as the basis for urban redevelopment.



Street Art Crossing by Amanda Yamaguchi



Many thanks to Typros, the Lobeck-Taylor Family Foundation and Kasey St. John for arranging the Professional Project juries at Street Cred 66 this April



Visions for the West River Bank Student Design Team



UNIVERSITY OF OKLAHOMA URBAN DESIGN STUDIO

Strategic Plan

The studio updated its strategic plan this year, including some **significant changes** to come:

- The studio has started a **re-branding** effort. The name of the Master of Science in Architectural Urban Studies degree will be changed to the **Master of Urban Design**.
- The studio will look for opportunities to establish a presence in Downtown Tulsa by working with professional partners.
- A new **Design Entrepreneurship and Real Estate Graduate Certificate** will be offered in both Norman and Tulsa.
- The studio curriculum and assessment is being modified to align with **AICP Certified Urban Designer** requirements.
- Growing professional partnerships and finding student and graduate job opportunities is a priority.



Possible concept for new logo

Health Impact Assessment for Go Plan!
improvements at Charles Page Boulevard.



CHED

Community Health and Environmental Design Studio

In its fifth year of operation, the CHED is a community resource promoting health and wellness through better environmental design of buildings, neighborhoods and cities. Our motto is **Better Health by Design**. The CHED has engaged in a variety of educational outreach, research, and community design projects in the last year.

➔ Professor Birkes taught his interdisciplinary class, **Community Health and the Built Environment** in the spring. Fourteen students from Urban Studies, Public Health, Public Administration, and Social Work collaborated on a selection of **Health Impact Assessments**, including the Up with Trees *Urban Forest Master Plan* and elements of the *Go Plan! Bicycle and Pedestrian Plan*.

CHED is grateful to faculty from many disciplines contributing to its efforts:

*Michael Birkes AIA
Architecture*

*Dave Boeck AIA
Architecture*

*Mia Kile ASID
Interior Design*

*April Merrill JD
Community Medicine*

*Julie Miller-Cribbs PhD
Social Work*

*Ken Randall PhD
Physical Therapy*

*Mary Williams PhD
Public Health*

*School of Community Medicine Summer Institute
participants take a bus tour of North Tulsa.*



- ➔ CHED Graduate Research Assistants Maryam Moradian, Paulina Baeza, Amanda Bentley, Jedidiah Bragg and Shakira White conducted over **100 hundred phone interviews** of patients from Professor Ken Randall's Physical Therapy Clinic for the Non-Attendance Survey. Results of the study will be available next spring.
- ➔ In April, Professor Birkes moderated a CHED Talk panel discussion on the Flint Water Crisis and **Tulsa's Water Quality** at the OU-Tulsa Schusterman Library.
- ➔ Professor Schaefer delivered an anchoring lecture to the **School of Community Medicine Summer Institute** for the eighth year. He also guided a bus tour for participants.
- ➔ The CHED is a partner with the School of Community Medicine's **Project REVIVE** research study to address the role of housing issues in the health of OU Clinic patients.



State and local officials discuss water quality at the CHED panel





Emeka Nnaka, Shane Hampton, Dawn Warrick, Nick Doctor, Bruce Dart, and Debbie Ruggles, join Gabe Klein (far right) on the Connected Tulsa 2016 panel.



SUDS President Daniel Sperle with Casey Stowe, Hannah Desmuth, Aaron Miller and Dustin Thames at the Dwell in the 918 Series held at 36 Degrees North.

SUDS

The Society of Urban Design Students

The SUDS has also had an active year with several activities.

- ➔ In March, SUDS co-hosted **Connected Tulsa 2016** with INCOG and several other sponsors. Over 60 planners, citizens, and students heard urbanist and transportation planner, **Gabe Klein**, talk about his book *Start-Up City*.
- ➔ SUDS President Daniel Sperle was project leader for a team from the **Center for Creating Economic Wealth** to improve health delivery systems for the Cherokee Nation.
- ➔ Daniel was also a panelist for the *Dwell in the 918 Series* produced by 36 Degrees North.
- ➔ Paulina Baeza made a presentation in September at **AIA Chit Chat 13**.



SUDS Officers:

Daniel Sperle
President

Amanda Yamaguchi
Vice-President

Paulina Baeza
Secretary / Treasurer

Joel Hensley
OUTSGA Representative

Curtis Blevins
OUTSGA Representative



Trustees of the Tulsa Performing Arts Center meet with students to discuss the ANNEX, a mixed-use development they are considering adjacent to the PAC.



Service

- ➔ Professor Schaefer served as a trustee for **Smart Growth Tulsa** where he helped create a Budget Allocator and Opinion Poll for the Tulsa Vision election.
- ➔ Students from the studio met with trustees of the **Performing Arts Center** to facilitate a discussion about the merits of the ANNEX project on land currently owned by the trust.
- ➔ Paulina Baeza and Director Schaefer facilitated the transit, cycling, and pedestrian interest group discussions for INCOG's **2040 Regional Transportation Plan**.
- ➔ Professor Schaefer joined City of Tulsa Resiliency Officer Mary Kell and Leah Kos from the University's Southern Climate Impacts Planning Program to give a presentation about **resilient design** to the Eastern Oklahoma chapter of the AIA.
- ➔ Peter Myers' group of seventh graders from the **Union Schools Carrera Program** visited the studio in early December.



Damage to Sander's Barber Shop in Broken Arrow after the Pawnee Earthquake on September 3, 2016 illustrates the need for resilient design

Maryam Moradian pilots the College of Architecture drone and Paulina Baeza operates the camera during a training flight with Director Schaefer.



Noteworthy

- Kasey St. John was awarded the **Best Student Plan** award at the Oklahoma APA Conference in September. Congratulations, Kasey!
- Professor Birkes recently completed his term as **AIA Eastern Oklahoma Chapter President** for 2016.
- The College of Architecture's **Unmanned Aerial System** is now hangared at the studio. Director Schaefer was certified as a FAA Remote Pilot in August.
- Professor Schaefer received the **Certified Urban Designer** specialty from the American Institute of City Planners in May.
- Adjunct Professor James Wagner was named **Chief of Performance Strategy and Innovation** by new Tulsa Mayor G.T. Bynum in December.
- Paulina Baeza was awarded the 2017 **Women in Transportation Scholarship**. Congratulations, Paulina!



Director Schaefer presents Kasey St. John her award for the **See Sand Springs!** economic development and marketing plan



Director Schaefer made a visit to the Earthship Biotechnology Center in Taos, NM, last summer to learn about ecologically sensitive building and design

The studio surveyed its alumni this summer and eighteen of our 133 alumni responded. Here are some highlights from the survey findings:

100%

Said their education at the studio was a good value.

86%

Said they are extremely satisfied with their studio experience.

87%

Said their studio experience prepared them very well or extremely well for their current work.

88%

Said they use the skills they learned at the studio every day or several times a week.

Alumni News

- Daniel Sperle, 2016, was hired as the first Executive Director for **Tulsa Bike Share**.
- Jessica Shelton, 2015, is now coordinating housing programs for **Growing Together** as their Neighborhood Planning Senior Specialist.
- Erik Enyart, 2010, has joined the team at **Tanner Consulting** as the Director of Planning.
- Marcae' Hilton, 2011, is now City Planner for the **City of Bixby**.
- Amanda Yamaguchi, 2016, accepted the position of Assistant City Planner for the **City of Broken Arrow**.
- Jessica Brent, 2011, is the Executive Director for the **Tulsa Route 66 Main Street Association**.
- Nathan Foster, 2016, was promoted to Land Use Planner at **INCOG**.



Contact Us

The Urban Design Studio is always looking for promising students and interested community partners for its programs and projects. Please contact us for more information:

The University of Oklahoma
Urban Design Studio
Shawn Michael Schaefer, Director
4502 East 41st Street
Tulsa, Oklahoma 74135
918.660.3493
sschaefer@ou.edu

<http://tulsagrad.ou.edu/studio>
or visit the CHED and OUUDS on facebook

The University of Oklahoma is an Equal Opportunity Institution.

Urban Design Studio
College of Architecture
The University of Oklahoma
4502 East 41st Street
Tulsa, Oklahoma 74135

